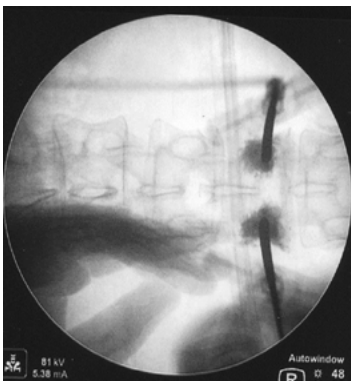


# Product information



**Product name:** Pedicle Starter Set  
**Body area:** lumbar spine, thoracic spine  
**Surgical technique:** Percutaneously | Pedicle screw positioning | preparation of Vertebroplasty / Kyphoplasty / Biopsy

## Features/Design



1. Cheaper than Jamshidi Needle
2. Optimal for repeated pedicle preparation
3. No disturbing contrasts on the c-arm and x-rays-reduction due to extended handle
4. Hands are outside of ray path
5. 1.6mm cannulated, compatible with all K-Wires

## Dimensions

4.0 mm awl measure results in  $\varnothing$  4.0-4.2 mm pedicle drill



## Instrument-Information

Ref.	Description
Pedicle Starter Set	Pedicle Starter Set, consisting of: Handle (1), K-Wire (2), Trocar (1)



**Opening the dorsal access and the pedicle with the awl  
(Measure: 4.0 mm, drill-hole Ø 4.0 - 4.2 mm)**



**Removal of the central awl  
(reusable)**



**Insertion of the k-wire (up to 1.6 mm).  
Helps to position cannulated Instruments  
and pedicle screws**